

Subject: Info. & classes from LCBDD! noencrypt
Date: Thursday, March 28, 2024 at 5:30:21 PM Eastern Daylight Time
From: David McManus
Attachments: LCBDD June 2024.pdf

Good afternoon. Sending along a few items of interest. Please let me know if you need info. on other topics.

Thanks for all you and your staff do!

David

Medication Administration 3 Initial Certification class

There will be a Med. Admin. 3 initial certification class held on Tuesday, July 16th at the LCBDD office from 9:00-1:00. Use the link below to register staff. Seats are limited.

Link to register: <https://reg.planetreg.com/E3276435811521>

IN PERSON summer nutrition/cooking class!

LCBDD is partnering with the OSU Extension's SNAP-ED program to offer FREE classes on cooking/shopping and nutrition. Classes will be at 10 am. June 6, 13 and 20.

Location: LCBDD office, 116 N. 22nd St, Newark 43055

Questions? Contact duffy.383@osu.edu or 740-618-6329

Registration: Anna.Jeffries@lcountydd.org or 740-322-6911

Conducting Quality UI Investigations

This recorded DODD webinar covers how unusual incidents (UI) investigations are part of a quality improvement process, drive prevention, and lead to better outcomes for people with disabilities. Links to additional resources, too.

This is reportedly an area that DODD is focusing on in Provider reviews.

<https://dodd.ohio.gov/health-and-welfare/toolkit/conducting-quality-ui-investigations>

David McManus

Provider Support Coordinator

Licking County Board of DD

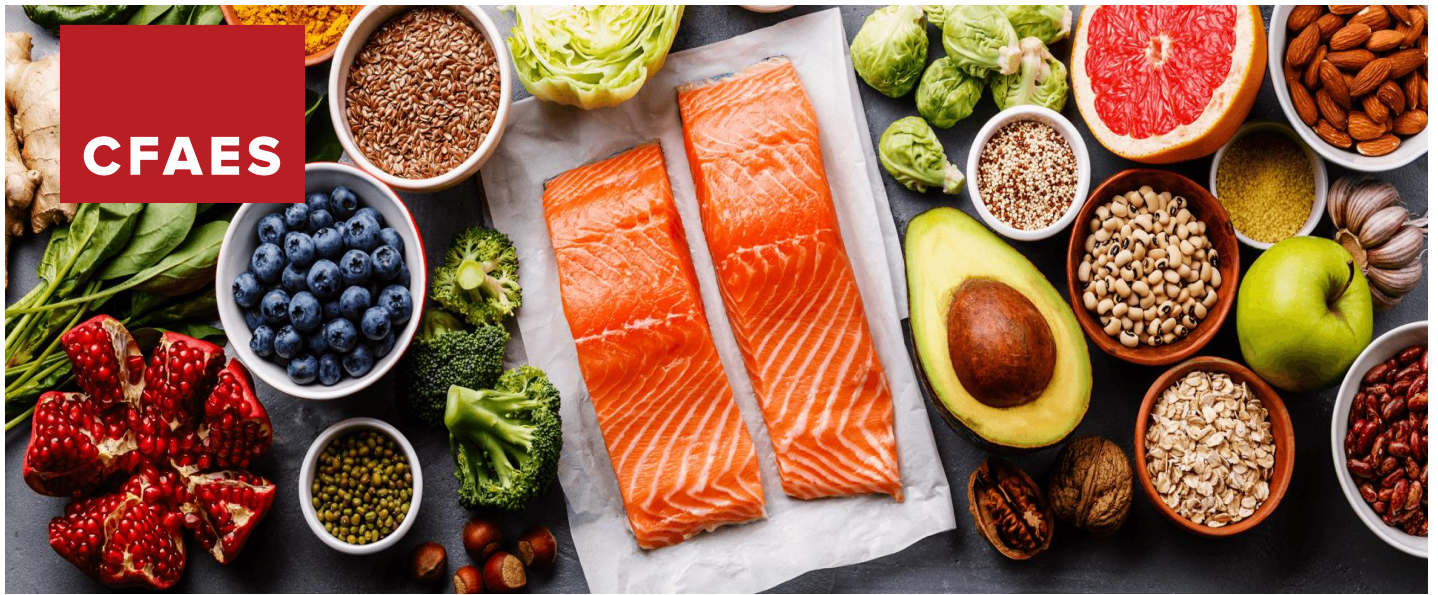
116 N. 22nd Street

Newark, OH 43056

740-349-6588

www.lcountydd.org





For the HEALTH of it!



Thursday's at 10:00am in June:
June 6, 13, 20 (attend one, two or all three!)

Want to sample a healthy recipe and receive information on nutritious food choices, plus learn about how to choose a physically active lifestyle? Join Michelle Duffy, Program Assistant for SNAP-Ed at OSU Extension, for **FREE** community nutrition. We'll focus on MyPlate, Vegetables & Fruits, Dairy, Whole Grains, Protein Foods, Food Shopping and so much MORE!

Location:

Licking County Board of DD

116 N. 22nd St., Newark

Register with Anna Jeffries

**Anna.Jeffries@lcountydd.org OR
740-322-6911**

Questions contact:

Michelle Duffy, SNAP-Ed Program Assistant
for OSU Extension, Licking County
duffy.383@osu.edu or 740-618-6329

Classes are provided through a partnership between
Licking County Board of DD & SNAP-Ed at OSU
Extension, Licking County.



licking.osu.edu

 **THE OHIO STATE UNIVERSITY**
COLLEGE OF FOOD, AGRICULTURAL,
AND ENVIRONMENTAL SCIENCES

— *We Sustain Life* —

CFAES provides research and related educational programs to clientele on a nondiscriminatory basis. For more information, visit cfaesdiversity.osu.edu. For an accessible format of this publication, visit cfaes.osu.edu/accessibility.